

## SAFETY DATA SHEET: DUST2DUST

### 1. IDENTIFICATION

**Product Name:** Dust2Dust  
**Other Names:** None  
**Recommended Use:** Insecticide  
**Distributor:** Key Industries Ltd  
**Address:** PO Box 65070 Mairangi Bay Auckland 0754  
**Telephone:** 09 917 1791  
**Emergency Phone:** 027 4941659  
**National Poisons Centre:** 0800 764 766

### 2. HAZARDS IDENTIFICATION

**Hazard Classification:** 6.4A, 6.5B, 6.9B, 9.1A, 9.4B  
**Hazards:** Low toxicity if inhaled  
 Low oral toxicity if swallowed  
 May cause mild eye irritation  
 May cause mild skin irritation  
 Causes damage to organs through prolonged or repeated exposure.  
 Very toxic to fish and freshwater invertebrates.  
 Inhibits the growth of bacteria

### 3. COMPOSITION: INFORMATION ON INGREDIENTS

Ingredients:	CAS Number	Concentration (%w/w)
Permethrin	52645-53-1	2.0%
Talc	14807-96-6	>80%

### 4. FIRST AID MEASURES

Consult the National Poisons Information Centre 0800 POISON (0800 764 766) or a doctor in every case of suspected chemical poisoning. Never give fluids or induce vomiting if a patient is unconscious or convulsing regardless of cause of injury. If breathing difficulties occur seek medical attention immediately.

#### Effects and Symptoms

Dust2Dust has low oral, dermal and inhalation toxicity. The talc used in this product contains no asbestos fibre. Exposure at or below the TWA (2.5 mg/m<sup>3</sup>) is thought to protect workers from the significant risk of nonmalignant respiratory effects associated with talc dusts.

#### Swallowed

Dust2Dust has low oral toxicity; the Acute Oral LD<sub>50</sub> (rat) 12,000 mg/kg (calculated). However if poisoning occurs when swallowed, do not induce vomiting. If conscious and alert, rinse mouth and drink 1-2 cupfuls of water. Begin artificial respiration if the victim is not breathing. Use mouth to nose rather than mouth to mouth. Obtain urgent medical attention.

#### Skin Contact

Non irritating to the skin. Acute Dermal LD<sub>50</sub> (rabbit) > 2000 mg/kg. If on skin, immediately wash with plenty of soap and water. Remove contaminated clothing and shoes. Wash clothing before reuse. Destroy contaminated leather articles such as belts and watchbands. Seek medical attention.

EMERGENCY PHONE: KEY INDUSTRIES LTD (Frank Visser, Managing Director): 0274 941 659

Date of Issue: 12 January 2015

Date of Revision: 12 January 2020



### **Eye Contact**

Mildly irritating to the eyes. Immediately flush eyes with plenty of water for at least 15 minutes, occasionally lifting the upper and lower eyelids. Remove contact lenses if present and easy to do and continue rinsing. Do NOT allow victim to rub eyes or keep eyes closed. Obtain urgent medical attention.

### **Inhalation**

Low inhalation toxicity. Acute inhalation  $LC_{50}$  (rat) > 5.27 mg/L1 hour. It may irritate the mucous membranes of the respiratory tract. Move the victim to fresh air immediately. Begin artificial respiration if breathing has stopped. Obtain medical attention immediately.

### **First Aid facilities**

Provide eye baths and safety showers close to areas where exposure may occur.

### **Medical Attention**

Treat symptomatically and supportively, monitoring the development of hypersensitivity reactions with respiratory distress. Gastric lavage may be indicated if ingested. No known antidote. Do not confuse with cholinesterase poisoning. Skin contacted may be carefully cleaned with cleansing milk. Symptoms can be partially alleviated by the application of a vitamin E or moisturizing cream or anesthetic ointment. For eyes, instill local anesthetic drops e.g. 1% amethocaine hydrochloride eye drops. Give analgesics as necessary. In all cases consult the National Poisons Centre for the most up to date treatment information.

## **5. FIRE FIGHTING MEASURES**

Material may support combustion at elevated temperatures. Thermal decomposition and burning may produce toxic by-products. Do not allow contaminated run-off to enter drains. Self-contained breathing apparatus required. Use dry chemical, alcohol foam, or carbon dioxide as extinguishing media. Soft stream water fog only is necessary. Contain all runoff.

### **Hazardous thermal (de)composition products:**

Carbon monoxide, carbon dioxide, hydrogen chloride, chlorine, hydrogen chloride and sulfur dioxide.

### **Hazchem Code**

N/A

### **Flash Point**

N/A

## **6. ACCIDENTAL RELEASE MEASURES**

### **Small Spills**

Wear appropriate protective clothing whilst cleaning up small spills (see Personal Protection). Apply absorbent material such as earth, sand or clay granules to the spill. Sweep up material for disposal when absorption is complete. Clean up minor spills immediately.

### **Large Spills**

Wear protective clothing. Clear the area of all unprotected personnel. As a standard precautionary measure, shut off all sources of ignition. Place leaking containers into salvage drums. Apply absorbent material such as damp earth, sand or clay granules to spill area. Form a barricade around the spill and in front of drains or waterways in spill vicinity, using earth or other available material. Prevent entry of material into drains or water ways.

### **Waste Disposal Method**

Contaminated absorbent and wash water should be disposed of according to local regulations under the Resource Management Act. Avoid contamination of any water supply with chemical or empty container.

## 7. HANDLING AND STORAGE

### Precautions for safe handling

Do not contaminate water, feed, or food by storage, handling, or disposal. No smoking, eating or drinking should be allowed where material is used or stored. Read and observe all precautions and instructions on the label. Avoid contact with food, clothing, drugs or other household goods during transportation.

### Conditions for safe storage

Store containers upright and closed. Store in a cool, dry place away from direct sunlight and in well-ventilated areas, away from children and animals. Keep away from heat, ignition sources and strong oxidizers. Emptied containers may retain product residues.

## 8. EXPOSURE CONTROLS / PERSONAL PROTECTION

### Exposure Limits

Exposure guideline:

Workplace exposure standards: Not Established

Exposure Standards outside the workplace: Not Established

### Engineering Controls

Control airborne concentrations below the exposure guideline. Good general ventilation should be sufficient for most conditions.

### Hygiene Controls

Facilities storing or utilising this material should be equipped with an eyewash facility, safety shower and facility for washing hands/face after work.

### Personal Protective Equipment

#### Respiratory Protection

Wear an approved organic vapor respirator in absence of proper mechanical ventilation.

#### Eye Protection

Wear approved safety glasses, goggles, or a full-face shield.

#### Skin/Body Protection

DO NOT SMOKE, EAT, DRINK OR APPLY COSMETICS IN WORK AREA! Wear waterproof gloves when prolonged or frequently repeated contact could occur. Wash promptly if skin becomes contaminated. Wash at the end of each work shift and before eating, smoking and using the toilet.

## 9. PHYSICAL AND CHEMICAL PROPERTIES

<b>Appearance</b>	White powder with no detectable odour
<b>Physical State</b>	Powder
<b>Boiling Point</b>	Not applicable
<b>Melting Point</b>	Not applicable
<b>Flash Point</b>	Not applicable
<b>Solubility</b>	Does not mix readily with water. To be used as a dust.
<b>Specific Gravity @ 20°C:</b>	No data available

EMERGENCY PHONE: KEY INDUSTRIES LTD (Frank Visser, Managing Director): 0274 941 659

Date of Issue: 12 January 2015

Date of Revision: 12 January 2020



## 10. STABILITY AND REACTIVITY

<b>Chemical Stability:</b>	Stable at room temperature and pressure
<b>Hazardous decomposition products:</b>	Oxides of carbon under fire conditions.
<b>Specific Materials to Avoid:</b>	None known
<b>Hazardous Polymerisation:</b>	Will not occur

## 11. TOXICOLOGICAL INFORMATION

### Acute Effects

**Ingestion:** Single dose oral toxicity is considered to be low. Irritation and respiratory discomfort may occur.

**Eye Contact:** Mildly irritating to the eyes.

**Skin Contact:** Non irritating to the skin. Acute Dermal LD50 (rabbit) > 2000 mg/kg. A single prolonged exposure is not likely to result in the material being absorbed through the skin in harmful amounts.

**Inhalation:** Low inhalation toxicity. Acute Inhalation LC50(rat) > 5.27 mg/L/1 hour. It may irritate the mucous membranes of the respiratory tract.

**Chronic Effects** No data available on this formulation. In studies with laboratory animals, Permethrin Technical did not cause teratogenicity or reproductive toxicity.

## 12. ECOLOGICAL INFORMATION

### Ecotoxicity

No data is available on Dust2Dust Insecticidal Powder. The following information refers to Permethrin. Environmental Toxicology: Permethrin is considered highly toxic to fish and aquatic arthropods and has LC50 values which range from 0.02 µg/L to 315 µg/L. The aquatic arthropods tend to be some of the more sensitive species. Marine species are often more sensitive than freshwater species. Permethrin is slightly toxic to birds and the Acute Oral LD50 values are greater than 3,600 mg/kg. Do not contaminate sewers, drains, dams, creeks or any other waterways with product or the used container.

### Environmental Fate

Permethrin has a moderate rate of degradation in soil. It is stable over a wide range of pH values. Because permethrin has a high affinity for organic matter, there is little potential for movement in the soil or entry into ground water. Because of the ease with which biological systems degrade the molecule, the potential for bio-concentration and accumulation in the environment is low.

## 13. DISPOSAL CONSIDERATIONS

### **Product Disposal**

Dispose of product only by using according to label or using an approved waste disposal contractor. If this material as supplied becomes a waste care should be taken to ensure compliance with national and local authorities. It is the responsibility of the waste generator to determine the toxicity and physical properties of the waste generated to determine the proper waste identification and disposal methods in compliance with applicable regulations. Do not dispose of via municipal sewers, drains, natural streams or rivers.

EMERGENCY PHONE: KEY INDUSTRIES LTD (Frank Visser, Managing Director): 0274 941 659

Date of Issue: 12 January 2015

Date of Revision: 12 January 2020

### Packaging Disposal

Empty packaging should be taken for recycling, recovery or disposal through a suitably qualified or licensed contractor. Care should be taken to ensure compliance with national and local authorities. Packaging may still contain product residue that may be harmful. Incinerate via approved incinerators or crush and bury in an approved landfill. Ensure that empty packaging is managed **in accordance with Dangerous Goods and HSNO regulations.**

## 14. TRANSPORT INFORMATION

UN number:	UN 3077
Class or Division:	Class 9 (Miscellaneous Dangerous Goods)
Sub Class:	N/A
Packing Group:	Packing Group III
Marine Pollutant:	Dust2Dust Insecticidal Powder is a Marine Pollutant according to International Maritime Dangerous Goods (IMDG) Code and the International Air transport Association (IATA).
Proper shipping name:	ENVIRONMENTALLY HAZARDOUS SUBSTANCE, SOLID, N.O.S. (Contains 2% Permethrin).
Other Information:	NA

## 15. REGULATORY INFORMATION

Approval Number:	None
EPA Approval Number:	HSR000272
AsureQuality:	Approved type B and C (food, beverage and dairy factories)
MPI:	Approved type B (all food premises except Dairy)

## 16. OTHER INFORMATION

### Reasons for Issue:

Update format and content to comply with legislation.

The information sourced for the preparation of this document was correct and complete at the time of writing to the best of the suppliers knowledge. Each user should read this MSDS and consider the information in the context of how the product will be handled and used in the workplace. The document represents the commitment to the company's responsibilities surrounding the supply of this product, undertaken in good faith. This document should be taken as a safety guide for the product and its recommended uses, but is in no way an absolute authority. Please consult the relevant legislation and regulations governing the use and storage of this type of product. For further information, please contact Key Industries Limited



20/04/2015 H2456

Global Proficiency Ltd for AssureQuality Ltd,  
Ruakura Research Centre, Hamilton East,  
P O Box 20474 Hamilton.

Key Industries Limited, P O Box 65070 Mairangi Bay, Auckland,  
NZ Phone 09 917 1790, fax 09 917 1793. Contact Frank  
Visser. email frank@keyindustries.co.nz or Karen Thode karen@keyindustries.co.nz

To whom it may concern,

#### Dust2Dust

- Product description: pesticide insecticide Permethrin
- Product use: for control of insect pests listed in instructions

**"Passed AssureQuality assessment for food/beverage/dairy factory Type B/C outside food areas or compliant spot/ crack/ crevice application H2456" with conditions.** This assessment was prepared by Global Proficiency Ltd using HACCP principles to determine equivalence with food standards listed below. See <http://assessedproducts.assurequality.com/> This supports food Risk Management Programmes & other endorsements that may apply to this product include MPI regulated farm dairy approval, MPI dairy factory endorsement, MPI regulated non-dairy animal product approvals, EPA HSNO-OSH-environment approval (& previously AQIS).

**Conditions: type B outside food areas except for spot/crack/crevice application in food areas (& not as space spray) with food removed & providing no residue contributing to fly fall in food areas & no potential contact - with food, food contact surfaces, vents or packaging. Food contact surfaces to be remote/ protected/ or rinsed.**

#### General conditions:

- The product is to be used according to Manufacturer's Instructions, Good Manufacturing Practice (GMP), and applicable legislation.
- The assessment is subject to notification of change (e.g. in formulation, raw materials or instructions) and expires on 20/04/2020).
- The full report is attached for supplier review and verification. The assessment is activated by countersigning.

Prepared by Global Proficiency for AssureQuality Ltd...

*R. G. Hutchinson*

Supplier: *FE Visser*

Date: *20/4/2015*

#### Scope and purpose of the assessment:

- Assurequality assessment is a non-regulated, voluntary, and evidential certification by the supplier demonstrating equivalence with food safety standards, and also that product instructions address hazards for staff & equipment. The assessment is independently confirmed, without prejudice or guarantee, using information submitted by the supplier or from other sources. Confidentiality of the product formulation is maintained using coded material identifiers in the report, and appendices containing confidential information are provided only to the supplier.
- Scope: NZ checks (FSANZ, US FDA 21 CFR/ NSF, Food Chemicals Codex, EPA NZ, EU, French culinary listings or related data for equivalent safety). NZ background (Animal Products Act, Risk Management Programmes. Detergent & Sanitiser Manufacturer's Code of Practice) Detergent & Sanitiser Standards and Analytical Methods. Quality Manual - Assessment Procedures

#### Summary of assessment with risks highlighted:

- Prior information/ registrations (MPI cat B outside. AssureQuality BC noncontact. HSNO HSR000272).
- Food safety/toxicity (by no potential for contact or fly fall).
- QA (unfound unrequired for low contact)
- QC specs (Unfound. Unrequired for non-contact. Micro safety by anhydrous formula & resistance to micro-organisms).
- Instructions:
  - Label (Dust2Dust. Warning keep out of reach of children. General: insecticide vs. wasps, cockroaches, fleas & other crawling insects. Active 2g/kg Permethrin 40:60 in the form of dust. Company contact information. Back label. Approved Handler required. Toxicity warning: may be harmful if swallowed. Repeat exposure may have cumulative effects. Do not inhale dust. Do not eat drink or smoke while using. Remove protective clothing and wash hands before meals and after work. Wash contaminated clothing before re-use. May cause organ damage from repeat or high doses. May cause sensitisation from prolonged exposure. Avoid contact with skin & eyes. Eco-toxicity very toxic. Handling & storage away from foodstuffs etc. Personal protection, disposal, spillage and first aid. General instructions - ready to apply dust..no mixing..application deposits left undisturbed. Precautions - avoid contact with food, food utensils, & places food is stored or prepared. Before use remove or cover all exposed foodstuffs. Cover all dishes, utensils & places food is stored or prepared. Disclaimer is detailed. "AssureQuality approved food/ beverage/ dairy factory and storage areas (cat B & C). NZFSA approved type B (all animal products except dairy). Table of directions for use with situation including food preparation & storage

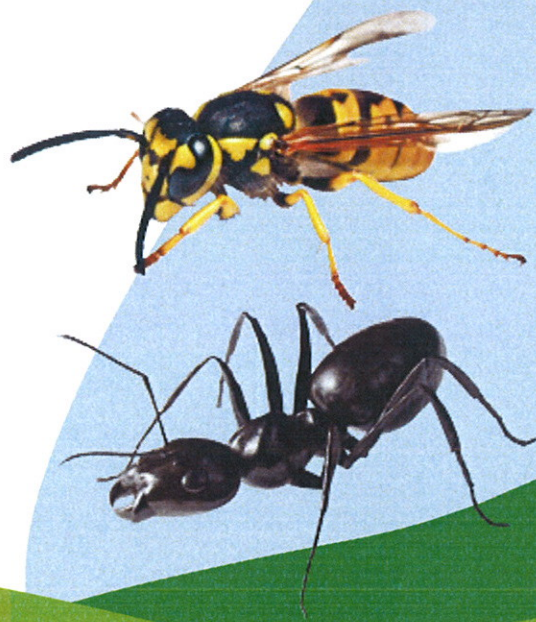




**Key Industries**  
Protecting people, crops and native species

# Dust2Dust™

## Insecticide



# Dust2Dust™

## Insecticide



**Key Industries Ltd**  
3/44L Constellation Drive PO Box 65070,  
Mairangi Bay, Auckland 0754  
Tel 09 917 1791 0800 539 463 Fax 09 917 1793  
Email [sales@keyindustries.co.nz](mailto:sales@keyindustries.co.nz)  
Web [www.keyindustries.co.nz](http://www.keyindustries.co.nz)

[www.keyindustries.co.nz](http://www.keyindustries.co.nz)



# Dust2Dust™

For the control of ants, cockroaches, fleas, wasps, bed bugs and other crawling insects.

Active Ingredient: 2g/kg Permethrin 40:60 in the form of a dust

## GENERAL INFORMATION

- Dust2Dust™ is a ready to use dust formulation and requires no further dilution. This product should not be mixed with other products. After application, powder deposits should be left undisturbed for as long as possible.
- Dust2Dust™ can be used in domestic, industrial and commercial premises, hotels, restaurants and institutions such as hostels, schools and hospitals.
- Dust2Dust™ is Assure Quality approved for food / beverage including dairy factory and storage areas (category B & C apply). MPI approved for all animal products except dairy (type D). Only apply as crack and crevice treatment for MPI approved treatments.
- Take care not to transfer Dust2Dust™ from non-food processing areas to processing areas on clothing or other materials. Make sure food processing areas are well ventilated after use and food preparation areas are thoroughly washed before edible products and packaging material are returned to the room.



**READ LABEL CAREFULLY BEFORE USE  
SHAKE WELL BEFORE USE**

## Directions for use

PEST	RATE & COMMENTS
Ants, Cockroaches, Fleas, Spiders and other crawling insects	Apply 10g/m <sup>2</sup> with a Makita blower or hand puffer. Blow powder into cracks and crevices, ceiling voids, wall and floor cavities. When ants are invading houses sprinkle powder in the areas where they are entering and along trails.
Wasps	Apply 40g to 250g of dust to the nest entrance way using a Makita blower, the Dust Stick for nests up high or the hand puffer. Treat at night when wasps are the least active. Operators should wear suitable protective clothing.

Hand Puffer

Dust Stick

Makita Blower

